

## UPGRADES & RETROFITS

### Innovative Film Infeed

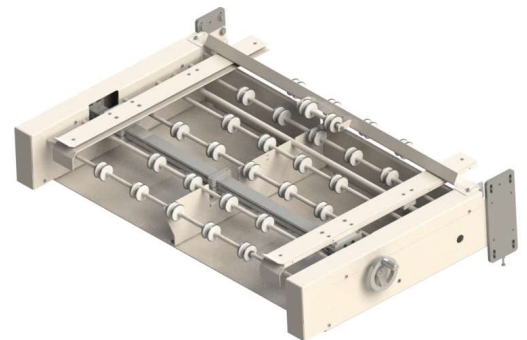
#### Farewell to scratches!

We have optimised the film insertion to avoid scratches and contamination on the film.

Even temperature distribution during film preheating and the threading in of the film become effortless.

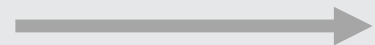
Increase the quality of your products and the efficiency of your work.

Ask your KIEFEL contact about our innovative film infeed!



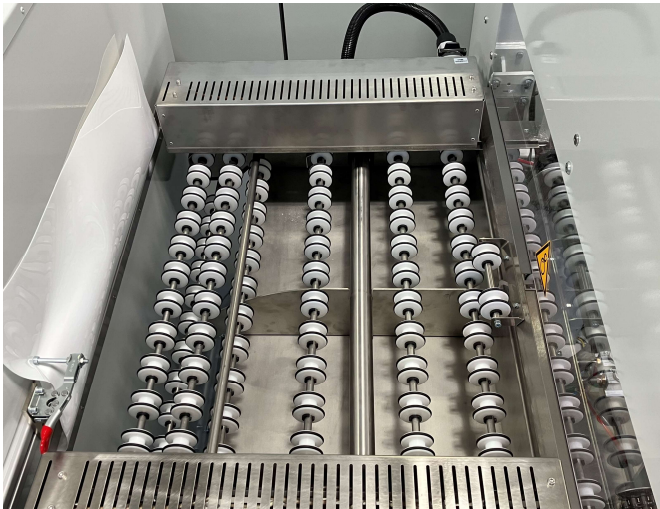
## We have the solution!

Upgrade to benefit  
from the  
advantages!



[Learn more](#)

## Innovative Film Infeed



## Requirements

- In order to carry out the installation yourself, you need mechanical and electrical specialists

## Scope of delivery

Straight infeed table incl. adapter and installation instructions

Recommendation! Combine the straight infeed table with the film edge heating (also available as a retrofit).

## Your Advantages

⊕ Scratches and contamination are prevented

⊕ The contact area between the film and the infeed table is reduced to a minimum

⊕ Improved and consistent product quality

⊕ More production time is available

## How to easily find your new solution:



Supply your machine ID to your contact person.



Installation can be carried out by your own maintenance technician.

Of course, installation by a KIEFEL service technician is also available.



After successful installation, the machine is ready for production.

Process parameters do not change.

## Machine type

KMD 78.1 Speed ID 297-xxx  
KMD 78.1 Premium ID 296-xxx

## Price\* and Delivery time\*\*

Material number: 10737476

Delivery time: 8 weeks

\*valid until 20.12.2024  
\*\*subject to availability