

UPGRADES & RETROFITS

Width adjustment between heating and forming station

Forget film sag!

Our width adjustment is installed between the heating and forming station of your KIEFEL machine.

The heating process causes the film to sag, which can subsequently lead to various difficulties in processing.

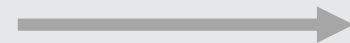
The width adjustment of the chain rail compensates for this film sag and enables precise and parallel feed into the forming station, resulting in improved product quality.

Ask your KIEFEL contact about our width adjustment between the heating and forming station!



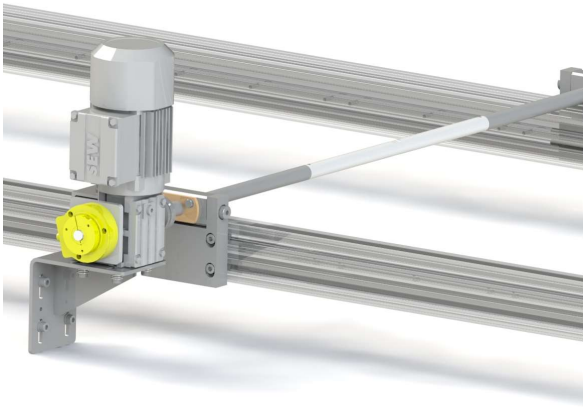
We have the solution!

Upgrade to benefit
from the
advantages!



[Learn more](#)

Width adjustment before FST





Requirements



- mbConnect remote maintenance ([mbConnect MDH871](#); also available as a retrofit)
- The option "Tool change in the block" is not installed

Scope of delivery

Width adjustment including electrical control, electrical diagram
Installation by KIEFEL personnel on site
A remote software update of the machine is necessary.

Your Advantages

-  Precise and parallel film transport
-  Compensates film sag

-  Improved and consistent product quality
-  Extended chain rail service life

How to easily find your new solution:



Supply your machine ID to your contact person.



Installation and commissioning are carried out by a KIEFEL Service technician.
The software update is carried out remotely by a KIEFEL Service programmer.



After commissioning, the machine will be handed over to you ready for production.
Process parameters are also added.

Machine type

KMD78.1 Speed ID 297-xxx
KMD78.1 Premium ID 296-xxx

Price* and Delivery time**

Material number: 10737479

Delivery time: 8 weeks

*valid until 20.12.2024
**subject to availability