

UPGRADES & RETROFITS

Water - coolable cover plate for heating

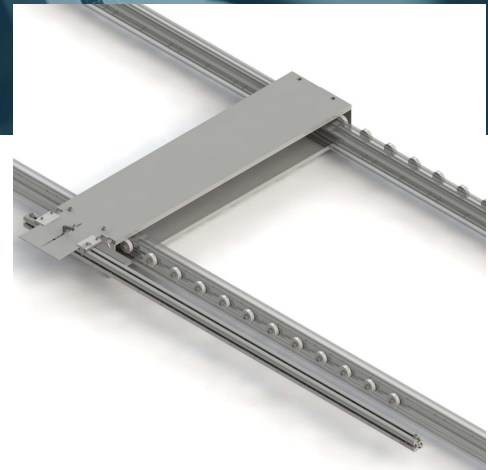
Even heating of your film!

Our water-cooled cover plate allows your film to be heated evenly.

The cover plate covers the infeed side of the heater in order to heat up evenly across all heating steps.

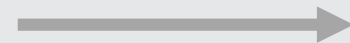
The cover plate is movable (on rollers) to ensure quick and easy product changes. In addition, the position of the cover plate can be read on a scale and can be saved to the recipe data. The standard width of the cover plate is 260mm, optionally the cover plate is also available 130mm or 65mm wide.

Ask your KIEFEL contact about our coolable cover plate!



We have the solution!

Upgrade to benefit
from the
advantages!



[Learn more](#)

Water-cooled cover plate



Requirements

- In order to carry out the installation yourself, you need mechanical specialists

Scope of delivery

Coolable cover plate including installation instructions

Your Advantages

- ⊕ Avoids partial, uneven heating of the film
- ⊕ Save time when changing products by saving the cover plate position in the recipe
- ⊕ Even heating of each feed step across the entire useful surface
- ⊕ Improved product quality and increased sustainability through reject reduction

How to easily find your new solution:



Supply your machine ID to your contact person.



Installation can be carried out by your own maintenance technician.
Of course, installation by a KIEFEL service technician is also available.



After successful installation, the machine is ready for production.

Machine type

KMD78.1 Speed ID 297-xxx
KMD78.1 Premium ID 296-xxx

Price* and Delivery time**

Material number: 10737480

Delivery time: 8 weeks

*valid until 20.12.2024
**subject to availability