

UPGRADES & RETROFITS

Splice detection after infeed

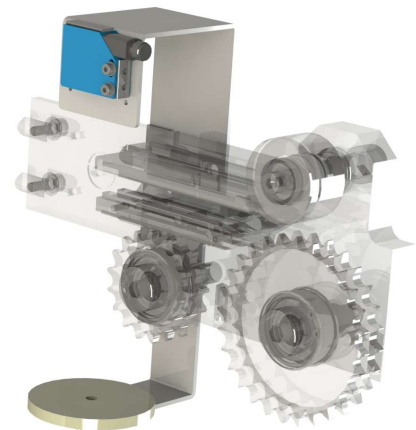
Produce more sustainably!

During film roll changes, the connection point between the two film strips is not recognized without splice detection. The consequence of this is the need for manual intervention and increased film consumption.

Our splice detection is the solution to this problem.

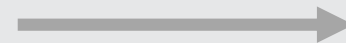
A sensor detects the film splice location. This causes the machine to skip the splice and suspend forming, punching and stacking only for the number of cycles necessary.

Ask your KIEFEL contact about our splice detection!



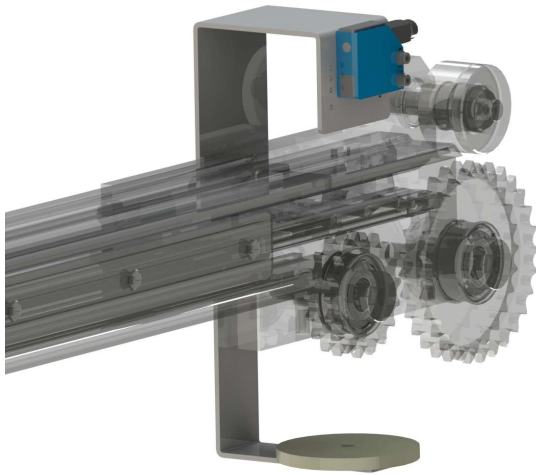
We have the solution!

Upgrade to benefit
from the
advantages!



[Learn more](#)

Splice detection after infeed



Requirements

- mbConnect remote maintenance ([mbConnect MDH871](#); also available as a retrofit)
- In order to carry out the installation yourself, you need mechanical and electrical specialists

Scope of delivery

Sensor system with reflector, assembly components, hole punch, electrical diagram, software adjustments, installation instructions
A remote software update of the machine is necessary.

Your Advantages

+ Reduced down-time when changing film

+ Cost savings due to reduced film consumption in the film change process

+ Manual operator intervention is no longer necessary

+ Cost-effective option for increased sustainability

How to easily find your new solution:



Supply your machine ID to your contact person.



Installation can be carried out by your own maintenance technician.

Of course, installation by a KIEFEL service technician is also available.



After the successful software update from KIEFEL and process optimization by your machine operator, the machine is ready for production.

Machine type

KMD 78.1 Speed ID 297-xxx
KMD 78.1 Premium ID 296-xxx

Price* and Delivery time**

Material number: 10737478

Delivery time: 8 weeks

*valid until 20.12.2024
**subject to availability