

UPGRADES & RETROFITS

Schedulable HMI retrofit IPC477E

Safe your production!

The HMI, which is installed in your machine, is now obsolete.

Attempting to repair the components in the event of a sudden failure is time-consuming or impossible and will lead weeks of machine downtime.

A minimum delivery time of 8 weeks is to be expected for modification.

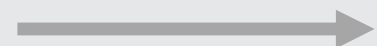
Therefore, we recommend you, this plannable modification of your machine.

The KIEFEL modification is based on new, available technology.



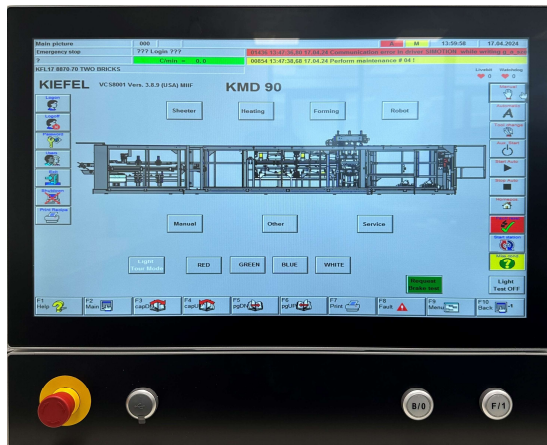
We have the solution!

Upgrade to benefit from
the advantages!



[Learn more](#)

Schedulable HMI retrofit



Requirements

- In order to carry out the installation yourself, you need mechanical and electrical specialists

Scope of delivery

IPC configured and licensed, electrical diagram, installation instructions

Your benefits

- Increased machine reliability and reduced risk of downtime
- Guaranteed availability of spare parts for the next few years
- HMI of the latest generation

This is how quickly you can get your new solution!



Supply your machine ID to your contact person.



Installation can be carried out by your own maintenance technician.

Of course, installation by a KIEFEL service technician is also available.



After successful installation, the machine is ready for production.

Machine type

KMD 60	ID 274-001 bis 274-022
KMD 64	ID 283-001 bis 283-046
KMD 78	ID 246-001 bis 246-233, ID 282-001 bis 282-054
KMD 85	ID 248-001 bis 248-103
KMD 90	ID 285-001 bis 285-048
KTR 6	ID 262-001 bis 262-070

Price* and delivery time**

Material no. 10737701

Delivery time: 8 Weeks

*valid until 20th Dec. 2024
**subject to availability